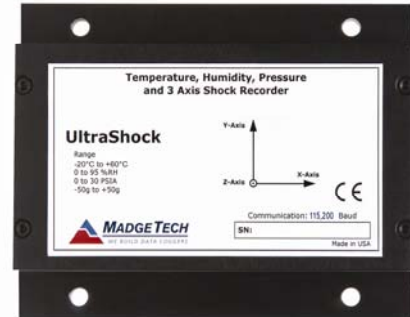


Features

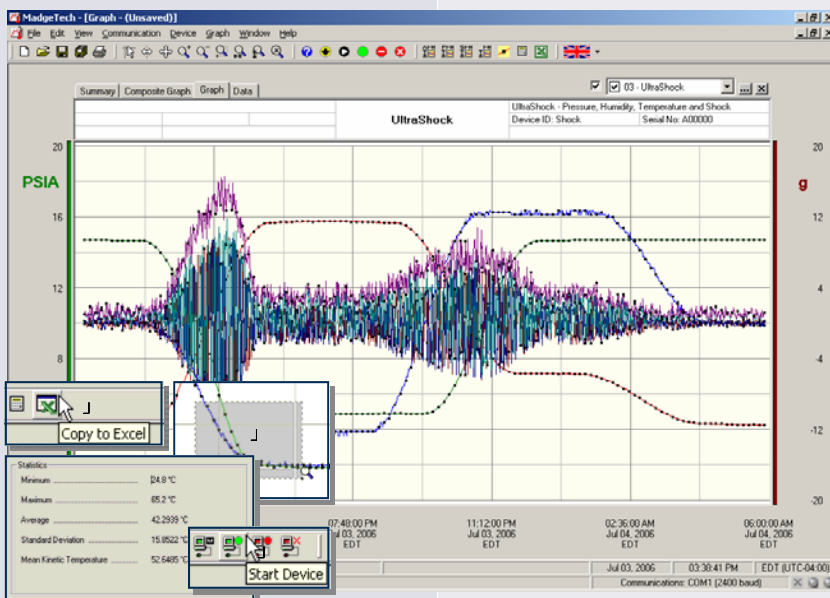
- Built-in accelerometers
- Compact
- Programmable start time
- High speed download
- Real-time operation (when not logging)
- Low cost
- Reusable
- User-friendly
- CE compliant

Applications

- Complete environmental shipment monitoring
- Shipping live cargo
- Aircraft turbulence measurement
- Endurance testing
- Assembly line monitoring
- Brake testing
- Laboratory drop testing
- Machinery monitoring
- Railcar coupling impacts



The UltraShock is a battery powered, stand alone temperature, pressure, humidity and 3-axis shock recorder. The UltraShock measures and records temperature, pressure and humidity at the selected reading rates, while shock is recorded as the peak acceleration levels over the same interval. The UltraShock is specifically designed for documenting dynamic environments such as moving vehicles, trucks, containers, ships, etc. The device is also valuable in characterizing environments such as production and assembly lines of delicate electronics, IC fabrication, communications and computer components. This compact, portable, easy to use device will measure and record up to 174,762 measurements per channel. The storage medium is non-volatile solid state memory, providing maximum data security even if the battery becomes discharged. The device can be started and stopped directly from your computer and it's small size allows it to fit almost anywhere. The UltraShock makes data retrieval quick and easy. Simply plug it into an empty COM or USB port and our user-friendly software does the rest.



MadgeTech Data Recorder Software

displays shock and pressure data in an easy to use graph.

The Windows®-based software package allows the user to effortlessly collect, display and analyze data. A variety of powerful tools allow you to examine, export, and print professional looking data with just a click of the mouse.

Click [MadgeTech Software](#) for more information or to download the software.

UTLRASHOCK SPECIFICATIONS*

Temperature Range: -20 to +60°C	Reading Interval: 64 readings every second to 1 every 5 minutes
Temperature Resolution: 0.1°C	Start Time: Software programmable start time and date, up to 24 hours in advance
Calibrated Accuracy: ±0.5°C (0 to +50°C)	Real Time Recording: May be used with PC to monitor and record instantaneous measurements in real time
Humidity Range: 0 to 95%RH	Calibration: Digital calibration through software
Humidity Resolution: 0.5%RH	Calibration Date: Automatically recorded within device
Calibrated Accuracy: ±3%RH (±2%RH typical at 25°C)	Power: 9V lithium or alkaline battery included
Specified Accuracy Range: +10 to +40°C; 10 to 80%RH	User Replaceable Battery: 7 days typical with lithium battery
Pressure Range: 0 to 30PSIA	Data Format: Date and time stamped °C, °F, K, °R ; %RH, mg/ml water vapor concentration; PSIA, inHg, mmHg, bar, atm, Torr, Pa, kPa, MPa, altitude; g
Pressure Resolution: 0.002PSIA	Time Accuracy: ±1 minute/month (at 20°C)
Calibrated Accuracy: ±1.0%FSR at 25°C; ±0.2% typical	Computer Interface: PC serial or USB (interface cable required); 115,200 baud
Acceleration Range (g): ±5 ±50 ±100	Software: Windows 95/98/ME/NT/2000/XP based software
Acceleration Resolution (g): 0.01 0.03 0.05	Operating Environment: -20 to +60°C, 0 to 95%RH non-condensing
Calibrated Accuracy (g): ±0.2 ±1.0 ±2.0	Dimensions: 3.5" x 4.4" x 1.1" (89mm x 112mm x 28mm)
Sampling Rate: 1.953 millisecond (512Hz)	Weight: 15 oz (435 g)
Memory: 174,762 readings per channel	Approvals: CE

BATTERY WARNING: DISCARD USED BATTERY PROMPTLY. KEEP OUT OF REACH OF CHILDREN. DO NOT DISPOSE OF IN FIRE, RECHARGE, PUT IN BACKWARDS, DISASSEMBLE, OR MIX WITH OTHER BATTERY TYPES. MAY EXPLODE, FLAME OR LEAK AND CAUSE PERSONAL INJURY.

SOFTWARE FEATURES

Multiple Graphs: Simultaneously analyze data from several units or deployments; easily switch to a single data series	Statistics: Calculate averages, min, max, standard deviation, and mean kinetic temperature with the touch of a button
Graphical Cursor: One click displays readings by time, value, parameter or sample number	Export Data: Export data in a variety of common formats, or switch to Excel® with a single click
Data Table: Instantly access tabular view for detailed dates, times, values, and annotations	Calibration: Automatically calculate and store calibration parameters
Scaling Options: Autoscale function fits data to the screen, or allows user to manually enter their own values	Logger Configuration: Easy set up and launch of data loggers with immediate or delayed start, preferred sample rate, and device ID
Formatting Options: Change colors, line styles, plotting options, show or hide channels quickly	Communications: Automatically sets up communications port, or lets user select configuration

*SPECIFICATIONS ARE SUBJECT TO CHANGE WITHOUT NOTICE. SPECIFIC WARRANTY AND REMEDY LIMITATIONS APPLY. CALL 1-603-456-2011 OR GO TO WWW.MADGETECH.COM FOR DETAILS.

ORDERING INFORMATION

ASK ABOUT OUR OTHER DATA RECORDERS

Temperature	Pulse/Event/State
Humidity	Low Level Current
Pressure	Low Level Voltage
pH	RF Transmitters
Level	Intrinsically Safe
Shock	Spectral Vibration



Birkenwaldstrasse 38
D-63179 Obertshausen
www.hero-instruments.de

Tel ++49 (0) 6104-98570
Fax ++49 (0) 6104-985733
hero-instruments@t-online.de