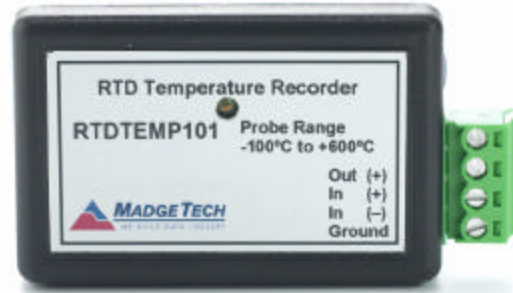


FEATURES

- ❖ N.I.S.T. traceable
- ❖ Real-time operation
- ❖ Low cost
- ❖ Programmable start time
- ❖ Reusable
- ❖ Miniature size
- ❖ User-friendly

APPLICATIONS

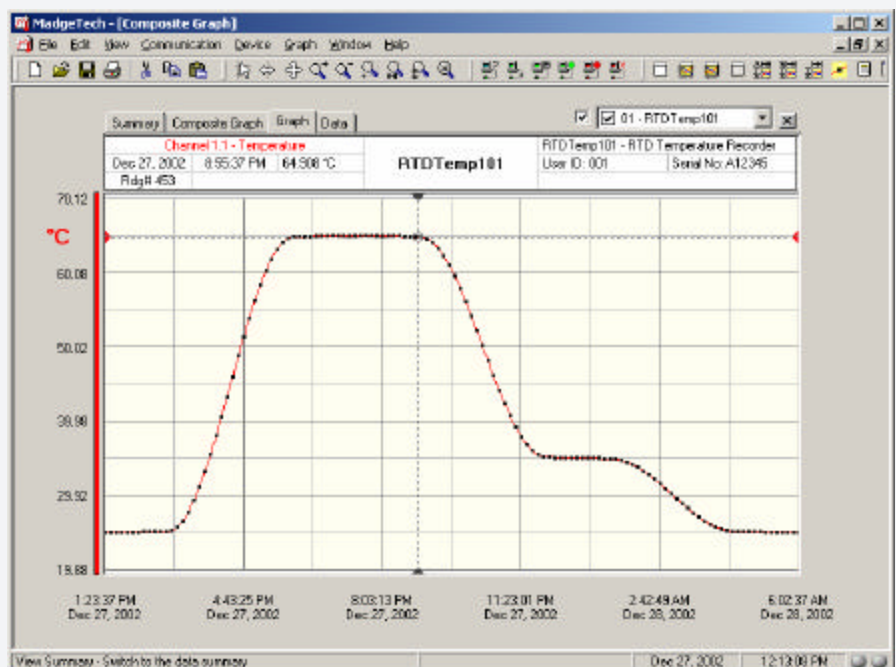
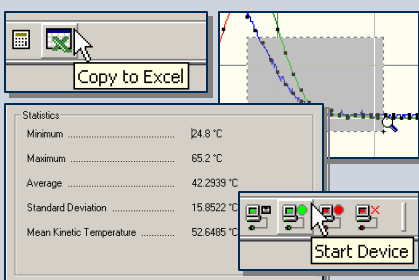
- ❖ Calibration chamber monitoring
- ❖ Warehouse monitoring
- ❖ HVAC
- ❖ Medical/Pharmaceutical
- ❖ Museum monitoring
- ❖ Environmental studies
- ❖ Replace costly strip chart recorders
- ❖ Implement HACCP programs
- ❖ Precision Temperature Recording



The RTDTEMP101 is a miniature, battery powered, stand alone, precision temperature recorder. This is an all-in-one compact, portable, easy to use device that will measure and record up to 21,845 measurements per channel. The storage medium is non-volatile solid state memory, providing maximum data security even if the battery becomes discharged. The device can be started and stopped directly from your computer and its small size allows it to fit almost anywhere. The RTDTEMP101 makes data retrieval quick and easy. Simply plug it into an empty com port and our user-friendly software does the rest.

SOFTWARE

MadgeTech's Data Recorder Software is an easy to use Windows-based software package that allows the user to effortlessly collect, display and analyze data. A variety of powerful tools allow you to examine, export, and print professional looking data with just a click of the mouse.



Demo our software at www.madgetech.com

RTDTEMP101 SPECIFICATIONS

Temperature*

Measurement Range: -200 °C to +850 °C

Resolution: 0.01 °C

Calibrated Accuracy: ±0.05 °C @ 25 °C

Specified Accuracy Range: -200 °C to +850 °C

Resistance

Nominal Range: 0 Ω to 5000 Ω

Resolution: 0.001 Ω

Calibrated Accuracy: ±0.015 Ω

Specified Accuracy Range: 0 Ω to 500 Ω @ 25 °C

Input Connection: Removable screw terminal; 2,3 or 4 wire interface

Temperature Effect on Span: < 25 ppm/°C; < 10 ppm/°C typical

Temperature Effect on Offset: < 10 ppm cumulative over -40 °C to +80 °C

Start Time: Software programmable Start time and date. Up to six months in advance

Real Time Recording: May be used with PC to monitor and record data in real time

Memory: 21,845 readings

Reading Interval: 1 reading every 2 seconds to 1 every 12 hours

Calibration: Digital calibration through software

Calibration Date: Automatically recorded within device

Power: 3.6V lithium battery included

User Replaceable Battery: 1 year typical (1minute reading rate at 25 °C)

Data Format: Date and time stamped °C, °F, °K, °R, Ω

Time Accuracy: ±1 minute/month (at 20 °C, RS232 Port not in use)

Computer Interface: PC serial or RS232C COM (Interface cable required); 2,400 baud

Software: Windows 95/98/ME/NT/2000/XP based software

Operating Environment: -40 °C to +80 °C, 0 to 95 %RH non-condensing

Dimensions: 0.6" x 1.4" x 2.5" (16mm x 35mm x 64mm)

Weight: 2 oz (60 g)

**Temperature specifications based on 100 Ω Pt RTD compliant with IEC 751 (1983) and ITS-90

RTDTEMP101 SOFTWARE FEATURES

Multiple Graphs: Simultaneously analyze data from several units or deployments; easily switch to a single data series

Real-Time Recording: Collect and display data in real-time while continuing to log

Graphical Cursor: One click displays readings by time, value, parameter or sample number

Data Table: Instantly access tabular view for detailed dates, times, values, and annotations

Scaling Options: Autoscale function fits data to the screen, or allows user to manually enter their own values

Formatting Options: Change colors, line styles, plotting options, show or hide channels in an instant

Statistics: Calculate averages, min, max, standard deviation, and mean kinetic temperature with the touch of a button

Export Data: Export data in a variety of common formats, or switch to Excel with a single click

Calibration: Fully digital calibration function automatically stores parameters in device

Logger Configuration: Easy set up and launch of data loggers with immediate or delayed start, preferred sample rate, and device ID

Communications: Automatically sets up communications port, or lets user set configuration

Printing: Automatically print graphical or tabular data

**As part of our commitment to continuous product improvement, MadgeTech reserves the right to change product specifications without notice.

ORDERING INFORMATION

Model	Description
RTDTEMP101	Precision Temperature Recorder
IFC101	Software, manual and 9-pin computer interface cable
N.I.S.T. Cert	N.I.S.T. Calibration Certificate

ASK ABOUT OUR OTHER DATA RECORDERS

Temperature	Voltage
Humidity	Current
Pressure	Submersible
pH	Intrinsically Safe
Level	RF Transmitters
Shock/Vibration	Multi-parameter
Pulse/Event	