

## FEATURES

- 3 · Intrinsically safe
- 3 · Rugged
- 3 · Reusable
- 3 · Programmable start time
- 3 · Real-time operation
- 3 · Automatic dew point & vapor concentration calculations
- 3 · N.I.S.T. traceable
- 3 · User-friendly
- 3 · Low cost

## APPLICATIONS

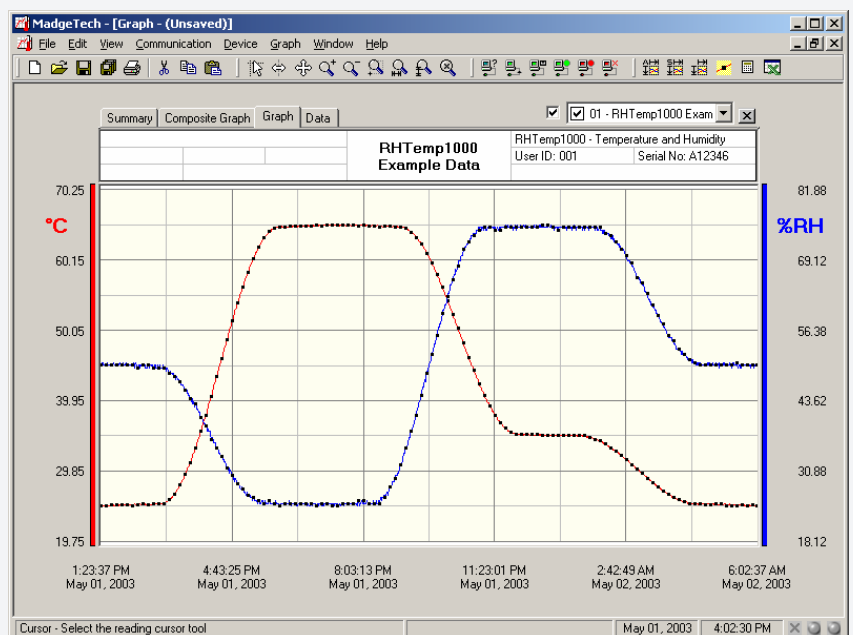
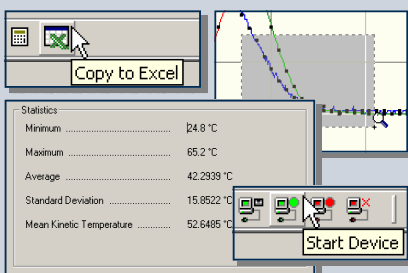
- 3 · EtO sterilization
- 3 · Implement HACCP programs
- 3 · Food preparation and processing
- 3 · Environmental studies
- 3 · Warehouse monitoring
- 3 · Hostile environment monitoring
- 3 · Medical/Pharmaceutical



The RHTEMP1000IS humidity and temperature logger is a rugged, water resistant, battery powered, stand alone device which can be used to automatically record humidity and temperature. This all in one compact, portable, easy to use device is able to measure and record up to 21,845 humidity and temperature measurements. The RHTEMP1000IS has been Factory Mutual certified as intrinsically safe for Class I, Division 1, groups A, B, C and D and non-incendive for Class I, Division 2 groups A, B, C and D hazardous environments. This certification makes the device ideal for uses such as EtO sterilization, environmental studies and numerous other hostile environment applications. Its real time clock ensures that all the data is time and date stamped. The storage medium is non-volatile solid state memory, providing maximum data security even if the battery becomes discharged. The RHTEMP1000IS can be started and stopped directly from your computer and its small size allows it to fit almost anywhere. The device makes data retrieval quick and easy. Simply plug the device into an empty COM port and our user-friendly software does the rest.

## SOFTWARE

MadgeTech's Data Recorder Software is an easy to use Windows-based software package that allows the user to effortlessly collect, display and analyze data. A variety of powerful tools allow you to examine, export, and print professional looking data with just a click of the mouse.



Demo our software at [www.madgetech.com](http://www.madgetech.com)

**Temperature Sensor:** Semiconductor  
**Temperature Range:** -40 °C to +80 °C  
**Temperature Resolution:** 0.1 °C  
**Calibrated Accuracy:** ±0.5 °C (0 to +50°C)

**Humidity Sensor:** Semiconductor  
**Humidity Range:** 0 to 100% RH  
**Humidity Resolution:** 0.5% RH  
**Calibrated Accuracy:** ±3%RH (±2% RH typical at 25 °C)  
**Response Time:** 90% change in 60 seconds in slow moving air

**Specified Accuracy Range:** 10 to 80 %RH, +10 °C to +40 °C

**Real Time Recording:** May be used with PC to monitor and record data in real time

**Start Time:** Software programmable start time and date. Up to six months in advance.

**Memory:** 21,845 readings per channel

**Reading Interval:** 1 reading every 2 seconds to 1 every 12 hours

**Calibration:** Digital calibration through software

**Calibration Date:** Automatically recorded within device

**Power:** 3.6V lithium battery included

**User Replaceable Battery:** 1 year typical at 25 °C, 1 minute reading intervals

**Data Format:** Date and time stamped °C, °F, °K, °R ; %RH, mg/ml water vapor concentration

**Time Accuracy:** ±1 minute/month at 20 °C (RS232 port not in use)

**Computer Interface:** PC serial or RS232C COM (Interface cable required); 2,400 baud

**Software:** Windows 95/98/ME/NT/2000/XP based software

**Operating Environment:** -40 °C to +80 °C, 0 to 100 %RH (case properly sealed)

**Dimensions:** 5.4" x 1.0" dia. (138mm x 26mm dia.)

**Weight (Aluminum) :** 5 oz (145 g)

**Weight (Stainless) :** 10 oz (285 g)

## RHTEMP1000IS SOFTWARE FEATURES

**Multiple Graphs:** Simultaneously analyze data from several units or deployments; easily switch to a single data series

**Real-Time Recording:** Collect and display data in real-time while continuing to log

**Graphical Cursor:** One click displays readings by time, value, parameter or sample number

**Data Table:** Instantly access tabular view for detailed dates, times, values, and annotations

**Scaling Options:** Autoscale function fits data to the screen, or allows user to manually enter their own values

**Formatting Options:** Change colors, line styles, plotting options, show or hide channels in an instant

**Statistics:** Calculate averages, min, max, standard deviation, and mean kinetic temperature with the touch of a button

**Export Data:** Export data in a variety of common formats, or switch to Excel with a single click

**Calibration:** Fully digital calibration function automatically stores parameters in device

**Logger Configuration:** Easy set up and launch of data loggers with immediate or delayed start, preferred sample rate, and device ID

**Communications:** Automatically sets up communications port, or lets user set configuration

**Printing:** Automatically print graphical or tabular data

\*\*As part of our commitment to continuous product improvement, MadgeTech reserves the right to change product specifications without notice.

### ORDERING INFORMATION

Model	Description
RHTEMP1000IS	Intrinsically Safe Humidity and Temperature Recorder
IFC101	Software, manual and 9-pin computer interface cable
N.I.S.T. Cert	N.I.S.T. Calibration Certificate

### ASK ABOUT OUR OTHER DATA RECORDERS

<b>Temperature</b>	<b>pH</b>
<b>Humidity</b>	<b>Level</b>
<b>Pressure</b>	<b>Shock/Vibration</b>
<b>Bridge/Strain</b>	<b>Submersible</b>
<b>Current</b>	<b>Intrinsically Safe</b>
<b>Pulse/Event</b>	<b>RF Transmitters</b>
<b>Voltage</b>	<b>Multi-parameter</b>



Birkenwaldstrasse 38  
D-63179 Obertshausen  
www.hero-instruments.de

Tel ++49 (0) 6104-98570  
Fax ++49 (0) 6104-985733  
hero-instruments@t-online.de