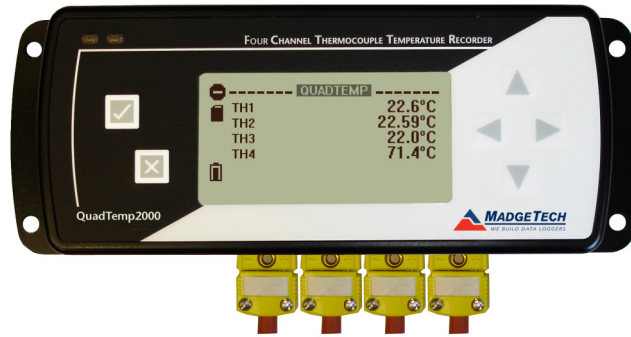


### Features

- Large Backlit LCD
- User-Friendly Front Panel
- Accepts thermocouple types J, K, T, E, R, S, B, N
- High speed downloading
- Onscreen statistics
- External power or user replaceable battery
- Low battery indicator

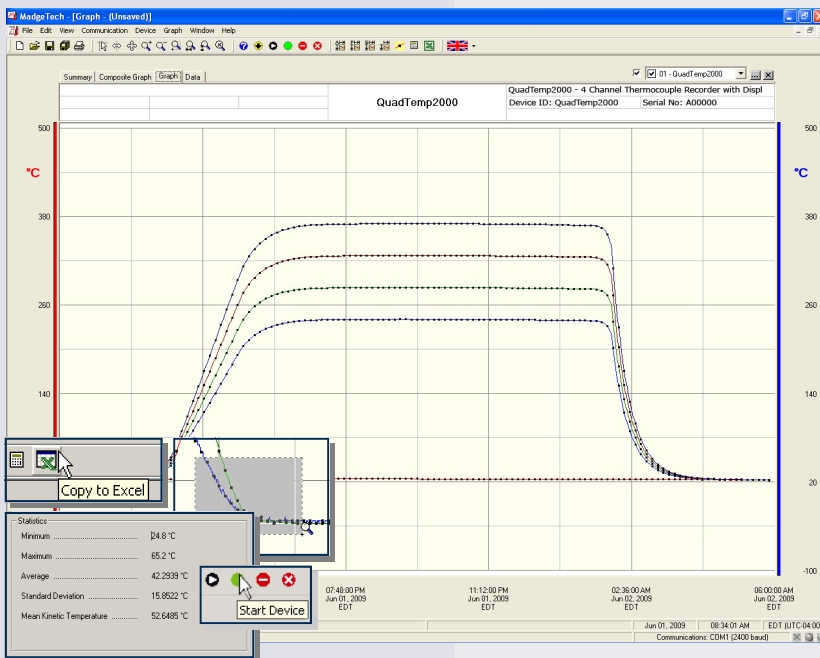
### Applications

- Monitor multiple points
- Warehouse monitoring
- Refrigerator monitoring
- Medical and Pharmaceutical
- Oven monitoring
- Smoke houses
- Food Processing
- HVAC
- Engine Studies



The QuadTemp2000 is a four channel thermocouple data logger with an LCD. The device features onscreen minimum, maximum and average statistics, as well as a user configurable graphics screen that allows for any combination of channels to be displayed. The device accepts J, K, T, E, R, S, B and N type thermocouples.

The QuadTemp2000 is ideal for a variety of applications, whether it is remote temperature monitoring, or multiple points in a central location. Data from all channels is simultaneously logged and displayed onscreen for real-time monitoring. It can then be downloaded to a PC for further analysis.



**MadgeTech Data Recorder Software** displays temperature data in an easy to use graph.

The Windows®-based software package allows the user to effortlessly collect, display and analyze data. A variety of powerful tools allow you to examine, export, and print professional looking data with just a click of the mouse.

Click [MadgeTech Software](#) for more information or to download the software.

# QUADTEMP2000 SPECIFICATIONS\*

## Internal Channel

Temperature Range: -20 to +60°C

Temperature Resolution: 0.1°C

Calibrated Accuracy: ±0.5°C (0 to +50°C)

## 4 Remote Channels

### Remote Channel

Thermocouple Types: J,K,T,E,R,S,B,N

Thermocouple connection: Female subminiature (SMP)

Cold Junction Compensation: Automatic, based on internal channel

Maximum Thermocouple Resistance: 1000Ω, <100Ω recommended

Thermocouple	Range (°C)	Resolution	Accuracy
J	-210 to +760	0.1 °C	±0.5 °C
K	-260 to +1370	0.1 °C	±0.5 °C
T	-260 to +400	0.1 °C	±0.5 °C
E	-260 to +980	0.1 °C	±0.5 °C
R	-50 to +1760	0.5 °C	±2.0 °C
S	-50 to +1760	0.5 °C	±2.0 °C
B	+60 to +1820	0.5 °C	±2.0 °C
N	-260 to +1300	0.1 °C	±0.5 °C

Start Modes: Software programmable immediate start or delay start up to six months in advance

Real Time Recording: May be used with PC to monitor and record data in real time

Memory: 500,000 readings per channel

Reading Rate: 4 readings per second up to 1 every 24 hours

Calibration: Digital calibration through software

Calibration Date: Automatically recorded within device

Battery Type: 9 Volt lithium or alkaline battery included, **user replaceable**

Battery Life: 18 months typical with display off. 3 months typical with continuous display use.

Data Format: Date and time stamped °C, °F, K, °R, mV, V

Time Accuracy: ±1 minute/month

Computer Interface: PC serial or USB (Interface cable required); 115,200 baud

Software: Windows 95/98/ME/NT/2000/XP/Vista software

Operating Environment: -20 to +60°C, 0 to 95%RH non-condensing

Dimensions: 7.24" x 2.7" x 1.14" (183mm x 68mm x 29mm)

Material: Black anodized aluminum

Weight: 15 oz (425 g)

Approvals: CE Pending

**BATTERY WARNING:** DISCARD USED BATTERY PROMPTLY. KEEP OUT OF REACH OF CHILDREN. DO NOT DISPOSE OF IN FIRE. RECHARGE, PUT IN BACKWARDS, DISASSEMBLE, OR MIX WITH OTHER BATTERY TYPES. MAY EXPLODE, FLAME, OR LEAK AND CAUSE PERSONAL INJURY.

## SOFTWARE FEATURES

**Multiple Graphs:** Simultaneously analyze data from several units or deployments; easily switch to a single data series

**Graphical Cursor:** One click displays readings by time, value, parameter or sample number

**Data Table:** Instantly access tabular view for detailed dates, times, values, and annotations

**Scaling Options:** Autoscale function fits data to the screen, or allows user to manually enter their own values

**Formatting Options:** Change colors, line styles, plotting options, show or hide channels quickly

**Statistics:** Calculate averages, min, max, standard deviation, and mean kinetic temperature with the touch of a button

**Export Data:** Export data in a variety of common formats, or switch to Excel® with a single click

**Calibration:** Automatically calculate and store calibration parameters

**Logger Configuration:** Easy set up and launch of data loggers with immediate or delayed start, preferred sample rate, and device ID

**Communications:** Automatically sets up communications port, or lets user select configuration

\*SPECIFICATIONS ARE SUBJECT TO CHANGE WITHOUT NOTICE. SPECIFIC WARRANTY AND REMEDY LIMITATIONS APPLY. CALL 1-603-456-2011 OR GO TO WWW.MADGETECH.COM FOR DETAILS.

## ORDERING INFORMATION

Model	Description	Price
QUADTEMP2000	4 Channel Thermocouple Recorder	Call for Pricing
IFC110	Software, manual and RS232 interface cable	
IFC200	Software, manual and USB interface cable	
NIST	N.I.S.T. Calibration Certificate	
U9VL-J	Replacement battery for QuadTemp2000	

### ASK ABOUT OUR OTHER DATA RECORDERS

Temperature	Pulse/Event/State
Humidity	Low Level Current
Pressure	Low Level Voltage
pH	RF Transmitters
Level	Intrinsically Safe
Shock	Spectral Vibration
LCD Display	