

## FEATURES

- 3 · 10 year battery life
- 3 · High speed download
- 3 · N.I.S.T. traceable
- 3 · Real-time operation
- 3 · Low cost
- 3 · Programmable start time
- 3 · Reusable
- 3 · Miniature size
- 3 · User-friendly

## APPLICATIONS

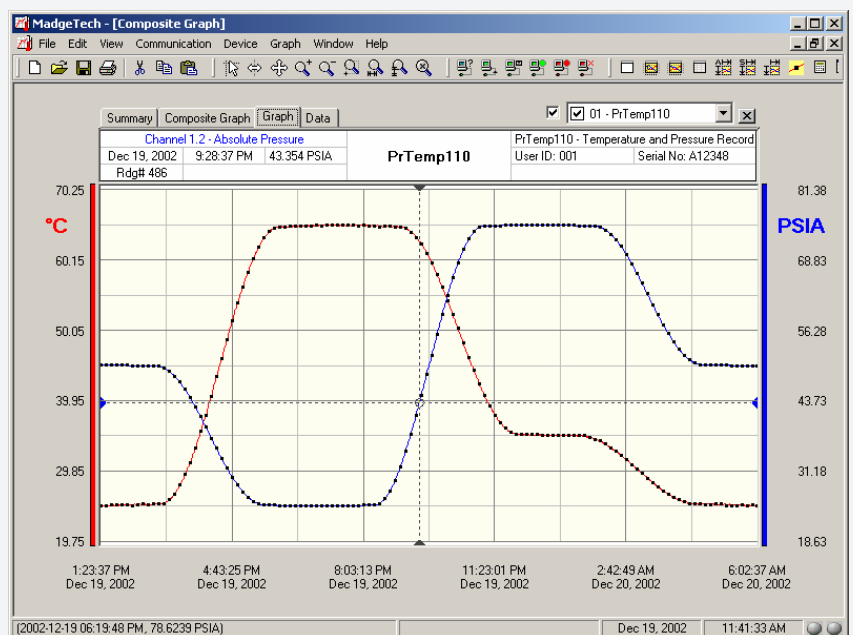
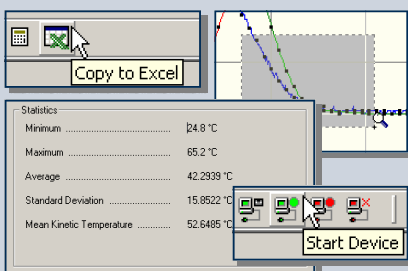
- 3 · Remote data logging
- 3 · Barometry
- 3 · Altitude recording
- 3 · Warehouse monitoring
- 3 · Pneumatics
- 3 · Medical/Pharmaceutical
- 3 · Museum monitoring
- 3 · Environmental studies
- 3 · Replace costly strip chart recorders



The PRTEMP110 is a miniature, battery powered, stand alone pressure and temperature recorder. The PRTEMP110 features a real-time clock module that extends the battery life to > 10 years\* and allows for high speed downloads. This is an all-in-one compact, portable, easy to use device that will measure and record up to 16,383 measurements per channel. The storage medium is non-volatile solid state memory, providing maximum data security even if the battery becomes discharged. The device can be started and stopped directly from your computer and its small size allows it to fit almost anywhere. The PRTEMP110 makes data retrieval quick and easy. Simply plug it into an empty com port and our user-friendly software does the rest.

## SOFTWARE

MadgeTech's Data Recorder Software is an easy to use Windows-based software package that allows the user to effortlessly collect, display and analyze data. A variety of powerful tools allow you to examine, export, and print professional looking data with just a click of the mouse.



Demo our software at [www.madgetech.com](http://www.madgetech.com)

## PRTEMP110 SPECIFICATIONS

<b>Temperature Sensor:</b> Semiconductor	<b>Memory:</b> 16,383 readings per channel
<b>Temperature Range:</b> -40 °C to +80 °C	<b>Reading Interval:</b> 1 reading every 2 seconds to 1 every 12 hours
<b>Temperature Resolution:</b> 0.1 °C	<b>Calibration:</b> Digital Calibration through software
<b>Calibrated Accuracy:</b> ±0.5 °C(0 to +50°C)	<b>Calibration Date:</b> Automatically recorded within device
	<b>Power:</b> 3.6V lithium battery included
<b>Pressure Sensor:</b> Semiconductor Strain Gauge	<b>*User Replaceable Battery:</b> 10 years (15 minute reading rate, 25 °C)
<b>Pressure Range:</b> 0 to 30 PSIA	<b>Data Format:</b> Date and time stamped °C, °F, °K, °R ; PSIA, inHg, mmHg, bar, atm, Torr, Pa, kPa, MPa, altitude
<b>Pressure Resolution:</b> 0.002 PSIA	<b>Time Accuracy:</b> ±1 minute/month (at 20 °C to 30 °C)
<b>Calibrated Accuracy:</b> ±1.0% FSR at 25 °C; ±0.2% typical	<b>Computer Interface:</b> PC serial or RS232C COM (Interface cable required); 57,600 baud
<b>Pressure Response Time:</b> 90% of change in 1 ms	<b>Software:</b> Windows 95/98/ME/NT/2000/XP based software
<b>Repeatability:</b> ±0.5 % FSR; ±0.2% typical	<b>Operating Environment:</b> -40 °C to +80 °C, 0 to 95 %RH non-condensing
<b>Start Time:</b> Software programmable Start time and date. Up to six months in advance	<b>Dimensions:</b> 1.61" x 2.26" x 0.76" (41mm x 58mm x 20mm)
<b>Real Time Recording:</b> May be used with PC to monitor and record data in real time	<b>Weight:</b> 2 oz (60 g)

## SOFTWARE FEATURES

<b>Multiple Graphs:</b> Simultaneously analyze data from several units or deployments; easily switch to a single data series	<b>Statistics:</b> Calculate averages, min, max, standard deviation, and mean kinetic temperature with the touch of a button
<b>Real-Time Recording:</b> Collect and display data in real-time while continuing to log	<b>Export Data:</b> Export data in a variety of common formats, or switch to Excel with a single click
<b>Graphical Cursor:</b> One click displays readings by time, value, parameter or sample number	<b>Calibration:</b> Fully digital calibration function automatically stores parameters in device
<b>Data Table:</b> Instantly access tabular view for detailed dates, times, values, and annotations	<b>Logger Configuration:</b> Easy set up and launch of data loggers with immediate or delayed start, preferred sample rate, and device ID
<b>Scaling Options:</b> Autoscale function fits data to the screen, or allows user to manually enter their own values	<b>Communications:</b> Automatically sets up communications port, or lets user set configuration
<b>Formatting Options:</b> Change colors, line styles, plotting options, show or hide channels in an instant	<b>Printing:</b> Automatically print graphical or tabular data

\*\*As part of our commitment to continuous product improvement, MadgeTech reserves the right to change product specifications without notice

### ORDERING INFORMATION

Model	Description
PRTEMP110	Pressure & Temperature Recorder
IFC110	Software, manual and 9-pin computer interface cable
N.I.S.T. Cert	N.I.S.T. Calibration Certificate

### ASK ABOUT OUR OTHER DATA RECORDERS

<b>Temperature</b>	<b>Voltage</b>
<b>Humidity</b>	<b>Current</b>
<b>Pressure</b>	<b>Submersible</b>
<b>pH</b>	<b>Intrinsically Safe</b>
<b>Level</b>	<b>RF Transmitters</b>
<b>Shock/Vibration</b>	<b>Multi-parameter</b>
<b>Pulse/Event</b>	



Birkenwaldstrasse 38  
D-63179 Obertshausen  
www.hero-instruments.de

Tel ++49 (0) 6104-98570  
Fax ++49 (0) 6104-985733  
hero-instruments@t-online.de