

FEATURES

- ❖ Rugged
- ❖ Reusable
- ❖ Submersible
- ❖ Programmable start time
- ❖ Real-time operation
- ❖ User-friendly
- ❖ Low cost

APPLICATIONS

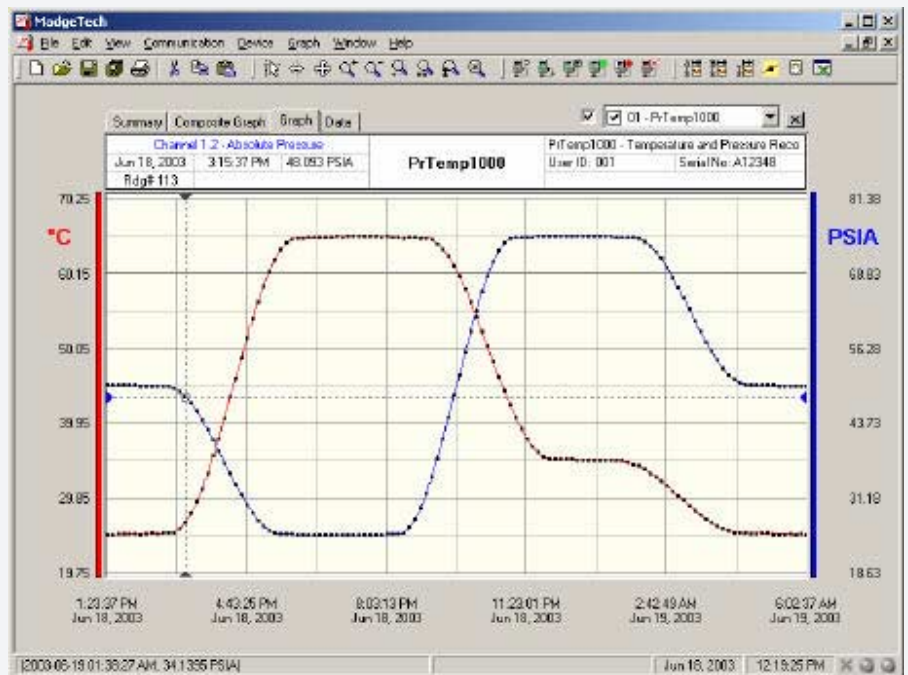
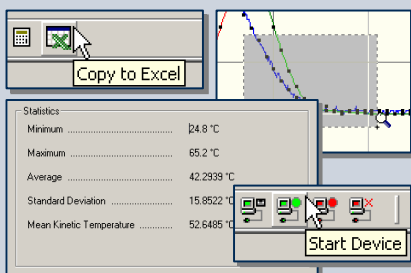
- ❖ Pneumatics
- ❖ Process control systems
- ❖ Gas compressors
- ❖ Natural gas production
- ❖ Lubrication systems
- ❖ Chemical processing
- ❖ Pulp and paper processing
- ❖ Medical instrumentation
- ❖ Environmental studies
- ❖ Waste water treatment
- ❖ HVAC
- ❖ Refrigeration
- ❖ Replace costly strip chart recorders



The PRTEMP1000 is a battery powered, stand-alone pressure and temperature data logger. This all-in-one compact, portable, easy to use device measures and records up to 16,383 pressure and 16,383 temperature measurements. The PRTEMP1000 accommodates numerous adaptors for various pressure ranges and pipe fittings. Its real time clock ensures that all data is time and date stamped. The storage medium is non-volatile solid state memory, providing maximum data security even if the battery becomes discharged. The device can be started and stopped directly from your computer and its small size allows it to fit almost anywhere. The PRTEMP1000 makes data retrieval quick and easy. Simply plug it into an empty com port and our user-friendly software does the rest.

SOFTWARE

MadgeTech's Data Recorder Software is an easy to use Windows-based software package that allows the user to effortlessly collect, display and analyze data. A variety of powerful tools allow you to examine, export, and print professional looking data with just a click of the mouse.



Demo our software at www.madgetech.com

PRTEMP1000 SPECIFICATIONS

Temperature Sensor: Semiconductor	Memory: 16,383 readings per channel
Temperature Range: -40 °C to +125 °C	Reading Interval: 1 reading every 2 seconds to 1 every 12 hours
Extended Temperature Range: 80 °C to 125 °C; 15 minutes	Calibration: Digital calibration through software
Temperature Resolution: 0.1 °C	Calibration Date: Automatically recorded within device
Calibrated Accuracy: ±0.5 °C	Power: 3.6V lithium battery included
Pressure Sensor: Semiconductor strain gauge	User Replaceable Battery: 1 year typical
Pressure Range: 0 to 30 PSIA, 100 psia, 300 psia, 500 psia	Data Format: Date and time stamped °C, °F, °K, °R ; PSIA(g), inches, feet, mmHg, bar, Torr, kPa,
Pressure Resolution: .002 psia/g, .005psia/g, .02 psia/g, .05 psia/g	Time Accuracy: ±1 minute/month (at 20°C, RS232 port not in use)
Calibrated Accuracy: 0.2 % FSR, .25 % @ 25 °C typical	Computer Interface: PC serial or RS232C COM (Interface cable required); 2,400 baud
Pressure Response Time: 0.1 ms (10% to 90% FSR)	Software: Windows 95/98/ME/NT/2000/XP based software
Repeatability: ± 0.5 % FSR; ± 0.2 % typical	Operating Environment: -40 °C to +125 °C, 0 to 99% RH
Adaptor: 1/4" male NPT or fully submersible	Dimensions: 1.25" x 6.3" (32 mm x 165 mm)
Start Time: Software programmable start time and date. Up to six months in advance	Weight: 10 oz (285 g)
Real Time Recording: May be used with PC to monitor and record data in real time	

PRTEMP1000 SOFTWARE FEATURES

Multiple Graphs: Simultaneously analyze data from several units or deployments; easily switch to a single data series	Statistics: Calculate averages, min, max, standard deviation, and mean kinetic temperature with the touch of a button
Real-Time Recording: Collect and display data in real-time while continuing to log	Export Data: Export data in a variety of common formats, or switch to Excel with a single click
Graphical Cursor: One click displays readings by time, value, parameter or sample number	Calibration: Fully digital calibration function automatically stores parameters in device
Data Table: Instantly access tabular view for detailed dates, times, values, and annotations	Logger Configuration: Easy set up and launch of data loggers with immediate or delayed start, preferred sample rate, and device ID
Scaling Options: Autoscale function fits data to the screen, or allows user to manually enter their own values	Communications: Automatically sets up communications port, or lets user set configuration
Formatting Options: Change colors, line styles, plotting options, show or hide channels in an instant	Printing: Automatically print graphical or tabular data

ORDERING INFORMATION

Model	Description
PRTEMP1000	Pressure & Temperature Recorder
IFC101	Software, manual and 9-pin computer interface cable
N.I.S.T. Cert	N.I.S.T. Calibration Certificate

ASK ABOUT OUR OTHER DATA RECORDERS

Temperature	Voltage
Humidity	Current
Pressure	Submersible
pH	Intrinsically Safe
Level	RF Transmitters
Shock/Vibration	Multi-parameter
Pulse/Event	