

FEATURES

- ❖ Transmits up to 1 mile
- ❖ Transparent operation
- ❖ Zero installation cost
- ❖ Easy integration
- ❖ Software configurable
- ❖ High reliability spread spectrum
- ❖ Compact

APPLICATIONS

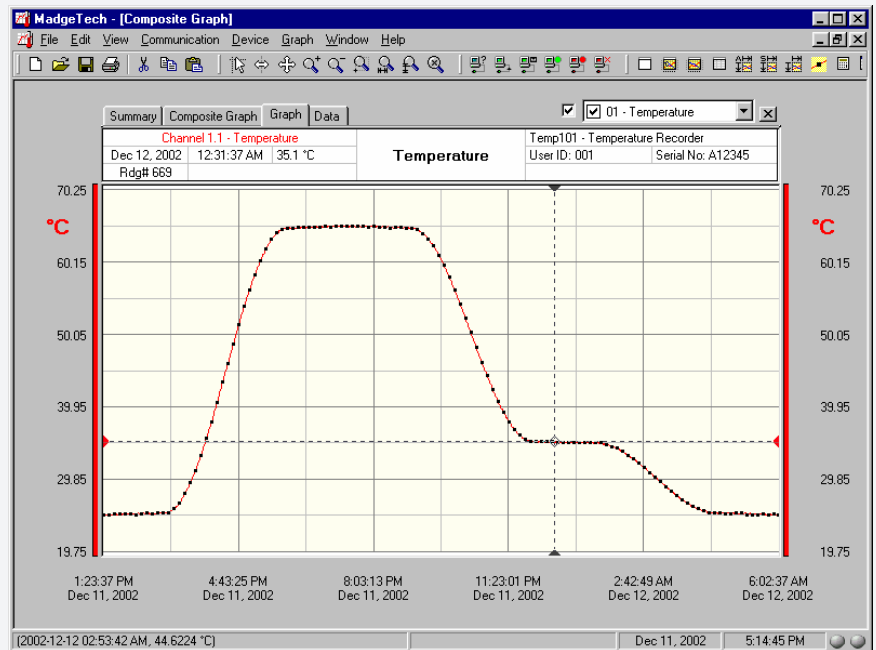
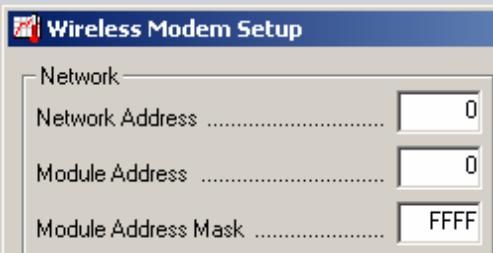
- ❖ Remote data logging
- ❖ Warehouse monitoring
- ❖ HVAC
- ❖ Medical/Pharmaceutical
- ❖ Museum monitoring
- ❖ Environmental studies
- ❖ Replace costly strip chart recorders
- ❖ Implement HACCP programs



The RFEXTENDER allows MadgeTech® data loggers* to be remotely mounted up to one mile away from a computer. The RFEXTENDER kit consists of one transceiver module to connect to a data logger through our existing interface cable, and one transceiver module to connect to a PC. Once connected, all communication between the computer and the logger is transparent to the user. The wireless link then allows full computer control over the data logger without the need for pushbutton start or stop. The transceiver modules can be configured directly through the MadgeTech software, which allows the user to easily switch between multiple transceivers on the same network. Individual addressing eliminates interference issues associated with multiple modules.

SOFTWARE

MadgeTech's Data Recorder Software is an easy to use Windows-based software package that allows the user to effortlessly collect, display and analyze data. A variety of powerful tools allow you to examine, export, and print professional looking data with just



RFEXTENDER SPECIFICATIONS

Serial Interface:	RS-232, DB-9 female serial port	Power:	7 V - 18 V DC, wall adapter included
Serial Speeds:	Software selectable 2400, 9600, 19200, 57600 bps	Power Consumption:	Tx: 210 mA, Rx: 70 mA, power down: < 10 µA
Radio Frequency:	902 - 928 MHz, unlicensed ISM band	Management:	Configurable through MadgeTech software
Radio Type:	Frequency hopping spread spectrum transceiver	Software:	Windows 95/98/ME/NT/2000/XP based software
Hop channels:	25 channel, 7 hop patterns	Operating Environment:	0°C to 70°C, 10% to 90% RH non-condensing
Networking:	Point-to-point, addressable	Mounting:	Built-in mounting flanges
Addresses:	65,535 unique addresses	Dimensions:	2.8" x 5.5" x 1.2" + 7" antenna (71mm x 140mm x 30mm)
Range:	Indoor: 600' to 1500' Outdoor: 0.5 mile typical Line-of-sight: 1 mile	Weight:	7 oz (200 g)
Approvals:	US (FCC), CA (IC)		

*RFEXTENDER is not currently compatible with SAFETEMP, SHOCK101 or ULTRASHOCK products

SOFTWARE FEATURES

Multiple Graphs:	Simultaneously analyze data from several units or deployments; easily switch to a single data series	Statistics:	Calculate averages, min, max, standard deviation, and mean kinetic temperature with the touch of a button
Real-Time Recording:	Collect and display data in real-time while continuing to log	Export Data:	Export data in a variety of common formats, or switch to Excel with a single click
Graphical Cursor:	One click displays readings by time, value, parameter or sample number	Calibration:	Fully digital calibration function automatically stores parameters in device
Data Table:	Instantly access tabular view for detailed dates, times, values, and annotations	Logger Configuration:	Easy set up and launch of data loggers with immediate or delayed start, preferred sample rate, and device ID
Scaling Options:	Autoscale function fits data to the screen, or allows user to manually enter their own values	Communications:	Automatically sets up communications port, or lets user set configuration
Formatting Options:	Change colors, line styles, plotting options, show or hide channels in an instant	Printing:	Automatically print graphical or tabular data

**As part of our commitment to continuous product improvement, MadgeTech reserves the right to change product specifications without notice.

ORDERING INFORMATION

Model	Description
RFEXT-KIT	Wireless data logging transceiver package
RFEXT	Wireless data logging transceiver expansion module

ASK ABOUT OUR OTHER DATA RECORDERS

Temperature	Voltage
Humidity	Current
Pressure	Submersible
pH	Intrinsically Safe
Level	RF Transmitters
Shock/Vibration	Multi-parameter
Pulse/Event	



201 Route 103 West - PO Box 50 · Warner, NH 03278
 Phone: (603) 456-2011 · Fax: (603) 456-2012
 info@madgetech.com · www.madgetech.com